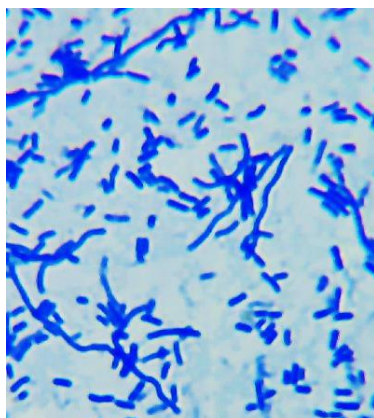


БАКТЕРИИ

NBIMCC 8432, *Escherichia coli*



Колонии



Клетки



Образуване на индол



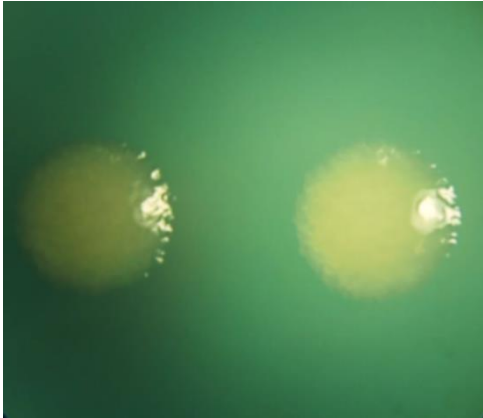
Биохимични реакции

NBIMCC 159, *Kocuria rhizophila*

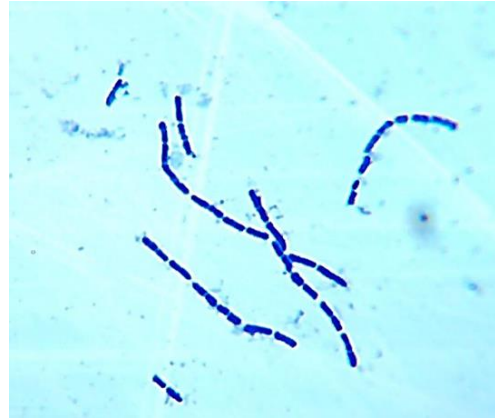


Чувствителност към антибиотици (Ар и Тс)

NBIMCC 8947^T, *Bacillus megaterium*

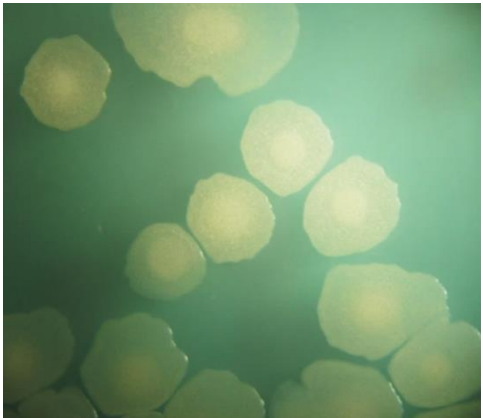


Колонии

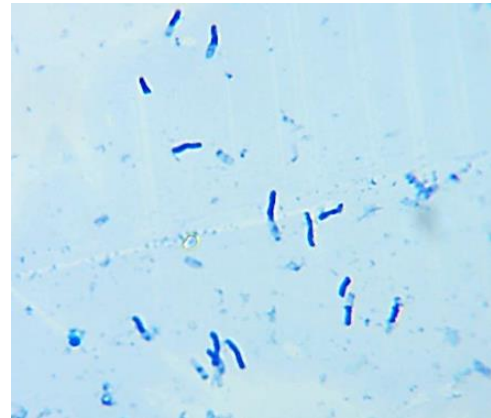


Клетки

NBIMCC 2353^T *Bacillus subtilis* subsp. *subtilis*

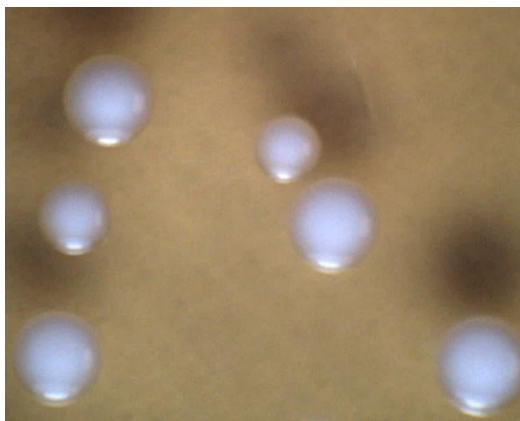


Колонии

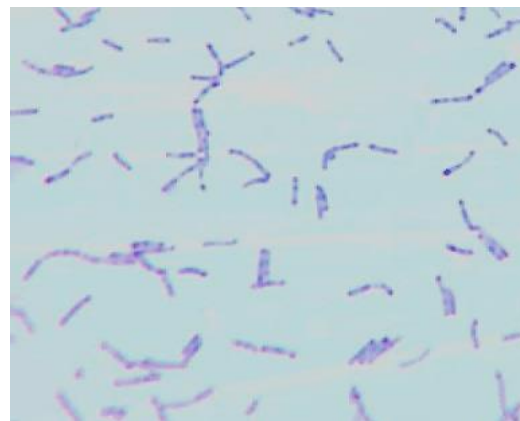


Клетки

NBIMCC 8821, *Bifidobacterium longum* subsp. *longum*

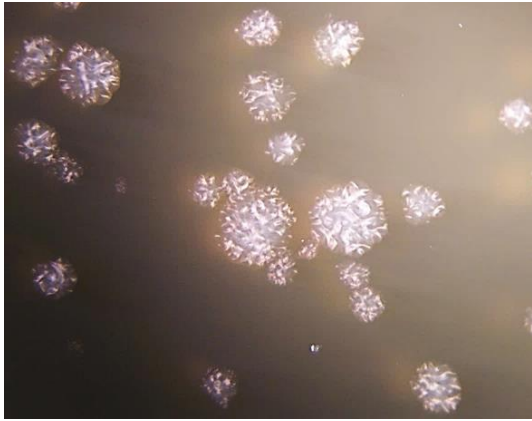


Колонии

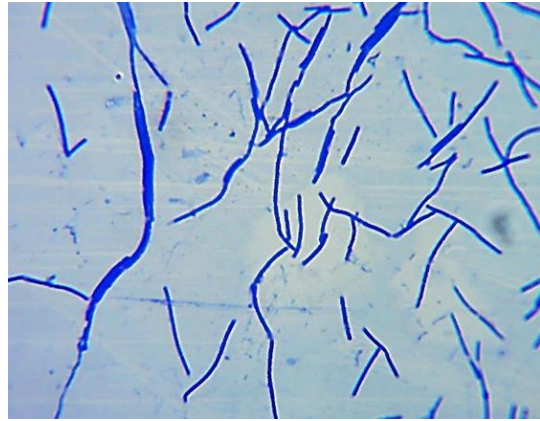


Клетки

NBIMCC 1132^T, *Lactobacillus delbrueckii* subsp. *bulgaricus*



Колонии

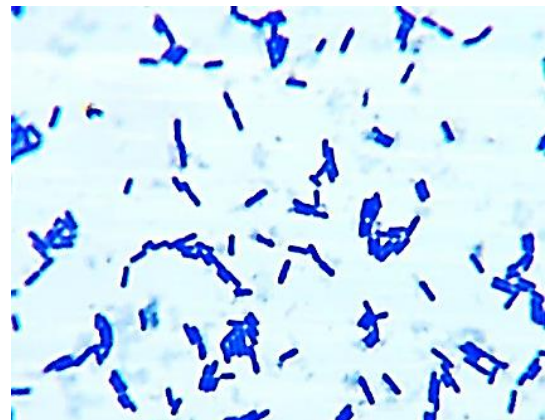


Клетки

NBIMCC 3447^T, *Lactobacillus plantarum*



Колонии

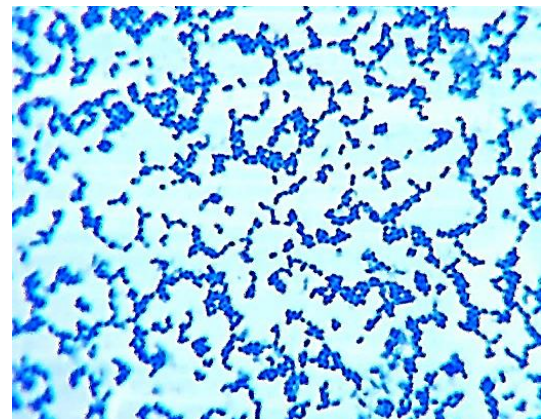


Клетки

NBIMCC 3455^T, *Leuconostoc mesenteroides* subsp. *mesenteroides*

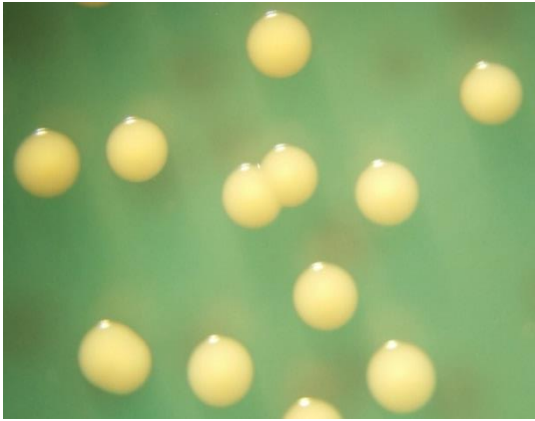


Колонии

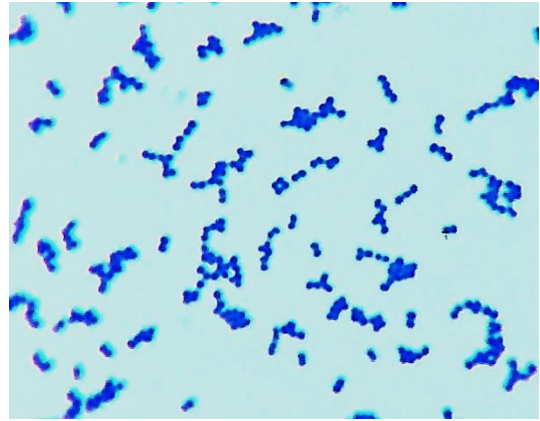


Клетки

NBIMCC 8934^T, *Micrococcus luteus*

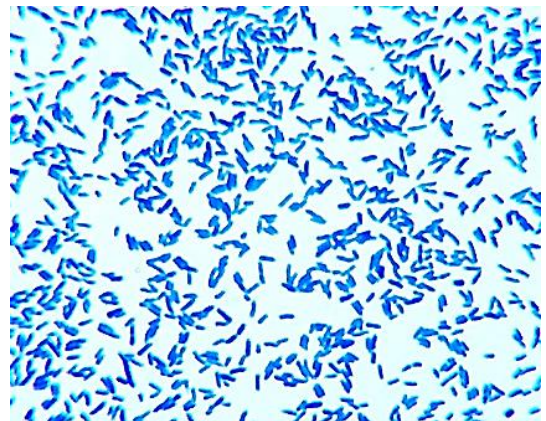
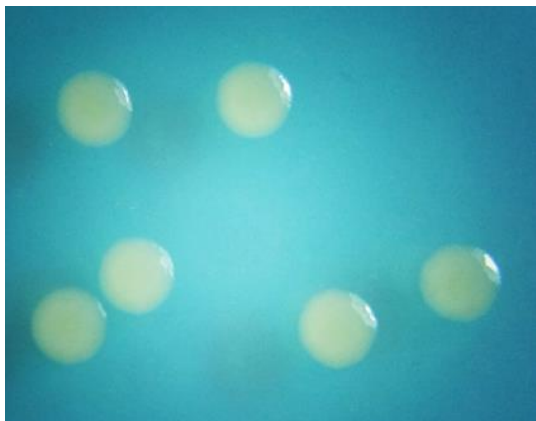


Колонии

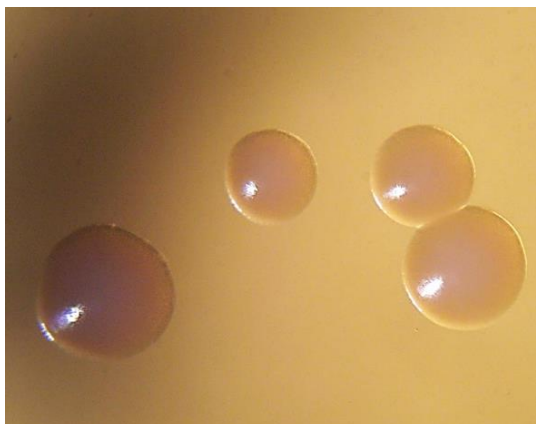


Клетки

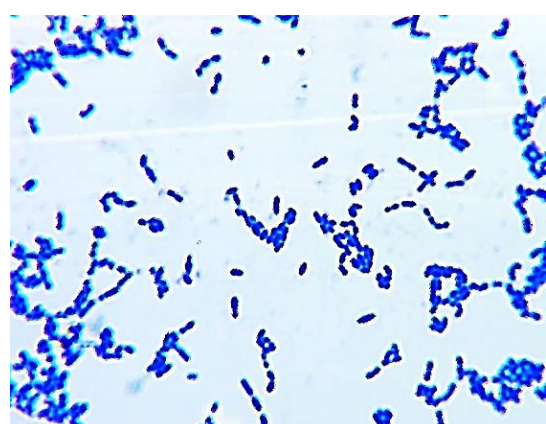
NBIMCC 8758^T, *Pseudomonas fluorescens*



NBIMCC 3916^T, *Streptococcus salivarius* subsp. *thermophilus*



Колонии



Клетки